



4331 EUCALYPTUS AVE. ~ CHINO, CA 91710

Phone 909-597-7800 Fax 909-597-7185

FTT10020 & BK & RW UNIVERSAL FRONT BUMPER

PARTS LIST:

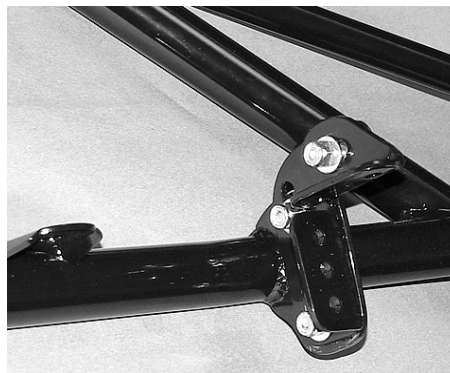
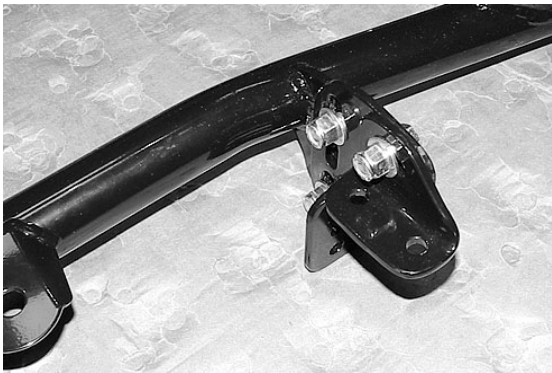
- 1 EA. FRONT BUMPER FT10020
- 1 EA. SMALL BRACKET DRIVER'S SIDE FT10020-2D
- 1 EA. SMALL BRACKET PASS. SIDE FT10020-2P
- 1 EA. MAIN BRACKET DRIVER'S SIDE FT10020-1D
- 1 EA. MAIN BRACKET PASS. SIDE FT10020-1P
- 2 EA. BUMPER CAPS FT60
- 14 EA. 3/8" X 1" BOLTS
- 28 EA. 3/8" SAE WASHERS
- 14 EA. 3/8" NYLOCK NUTS

CHECK ALL PARTS INCLUDED IN THIS KIT TO THE PARTS LIST ABOVE BEFORE BEGINNING INSTALLATION OF THE KIT. IF ANY PIECES ARE MISSING, CONTACT FABTECH AT 909-597-7800

TOOL LIST:

- 9/16" WRENCHES AND SOCKETS
- DRILL WITH 3/8" BIT
- CENTER PUNCH
- MASKING TAPE

INSTRUCTIONS:



1. Using the supplied 3/8" hardware, attach the 2 mounting brackets to the new bumper. There should be a 3/8" flat washer on each side of the bolt. Leave the bolts loose enough to allow adjustments in the bracket positions. Repeat this on the opposite side of the bumper.

2. Place strips of masking tape on your stock bumper where the mounting brackets will rest, to protect the bumper during alignment. Hold the universal bumper against the truck's bumper and mark the hole positions once the two are aligned and centered. You can use any combination of 2 to 3 bolt holes on the large front bracket and 1 to 2 on the small top bracket. On some vehicles, you may have to flip the brackets, placing the small bracket on the bottom.
3. Drill all marked holes to 3/8". **BE SURE THERE IS NO FLUID LINES AND PLENTY OF CLEARANCE BEHIND THE ORIGINAL BUMPER BEFORE YOU START DRILLING.**
4. Attach the front bumper to the original bumper using the rest of the 3/8" hardware. Make sure to use a 3/8" flat washer on each side of the bolts. Lightly tighten all 3/8" hardware and make any adjustments to the positioning of the bumper. Once the front bumper is aligned and centered with the original unit. Fully tighten all 3/8" hardware.
5. You can mount any standard 1/2" stud lights to the bumper at this time.

The factory airbag sensors should not be moved in any way during the installation of this universal front bumper. We recommend that the user check with the vehicle's manufacturer to insure compatibility of this universal front bumper with the factory airbag system. Fabtech will not guaranty the proper operation of the vehicle's airbag system if this universal front bumper is mounted contrary to the vehicle manufacturer's recommendations.

RETORQUE ALL NUTS, BOLTS AND LUGS AFTER 50 MILES AND PERIODICALLY THEREAFTER.

For technical assistance call: 909-597-7800

Product Warranty and Warnings-

Fabtech provides a Limited Lifetime Warranty to the original retail purchaser who owns the vehicle, on which the product was originally installed, for defects in workmanship and materials.

The Limited Lifetime Warranty excludes the following Fabtech items; bushings, bump stops, ball joints, tie rod ends, limiting straps, cross shafts, heim joints. These parts are subject to wear and are not considered defective when worn. They are warranted for 60 days from the date of purchase for defects in workmanship.

Coil over take apart shocks are considered a serviceable shock with a one year warranty on leakage only. Service seal kits are available separately for future maintenance. All other shocks are covered under our Limited Lifetime Warranty.

Fabtech does not warrant any product for finish, alterations, modifications and/or installation contrary to Fabtech's instructions. Alterations to the finish of the parts including but not limited to painting, powdercoating, plating and/or welding will void all warranties. Some finish damage may occur to parts during shipping which is considered normal and is not covered under warranty.

Fabtech products are not designed nor intended to be installed on vehicles used in race applications or for racing purposes or for similar activities. (A "RACE" is defined as any contest between two or more vehicles, or any contest of one or more vehicle against the clock, whether or not such contest is for a prize). This warranty does not include coverage for police or taxi vehicles, race vehicles, or vehicles used for government or commercial purposes. Also excluded from this warranty are sales outside of the United States of America.

Installation of most suspension products will raise the center of gravity of the vehicle and will cause the vehicle to handle differently than stock. It may increase the vehicle's susceptibility to a rollover, on road and off road, at all speeds. Extreme care should be taken to operate the vehicle safely at all times to prevent rollover or loss of control resulting in serious injury or death. Fabtech front end Desert Guards may impair the deployment or operation of vehicles equipped with supplemental restraining systems/air bag systems and should not be installed if the vehicle is equipped as so.

Fabtech makes every effort to ensure suspension product compatibility with all vehicles listed in the catalog, but due to unknown auto manufacturers production changes and/or inconsistencies by the auto manufacturer, Fabtech cannot be responsible for 100% compatibility, including the fitment of tire and wheel sizes listed. The Tire and Wheel sizes listed in Fabtech's catalog are only a guideline for street driving with noted fender trimming. Fabtech is not responsible for damages to the vehicle's body or tires.

Fabtech's obligation under this warranty is limited to the repair or replacement, at Fabtech option, of the defective product only. All costs of removal, installation or re-installation, freight charges, incidental or consequential damages are expressly excluded from this warranty. Fabtech is not responsible for damages and/or warranty of other vehicle parts related or non related to the installed Fabtech product. This warranty is expressly in lieu of all other warranties expressed or implied. This warranty shall not apply to any product that has been subject to accident, negligence, alteration, abuse or misuse as determined by Fabtech.

Fabtech suspension components must be installed as a complete system including shocks as shown in our current catalog. All warranties will become void if Fabtech parts are combined and/or substituted with other aftermarket suspension products. Combination and/or substitution of other aftermarket suspension parts may cause premature wear and/or product failure resulting in an accident causing injury or death. Fabtech does not warrant products not manufactured by Fabtech.

Installation of Fabtech product may void the vehicles factory warranty; it is the consumer's responsibility to check with their local vehicle's dealer for warranty disposition before the installation of the product.

It is the responsibility of the distributor and/or the retailer to review all warranties and warnings of Fabtech products with the consumer prior to purchase.

Fabtech reserves the right to supercede, discontinue, change the design, finish, part number and, or application of parts when deemed necessary without written notice. Fabtech is not responsible for misprints or typographical errors within the catalog or price sheet.

Instruction Sheet Part #- FT10020i

04/23/04jj